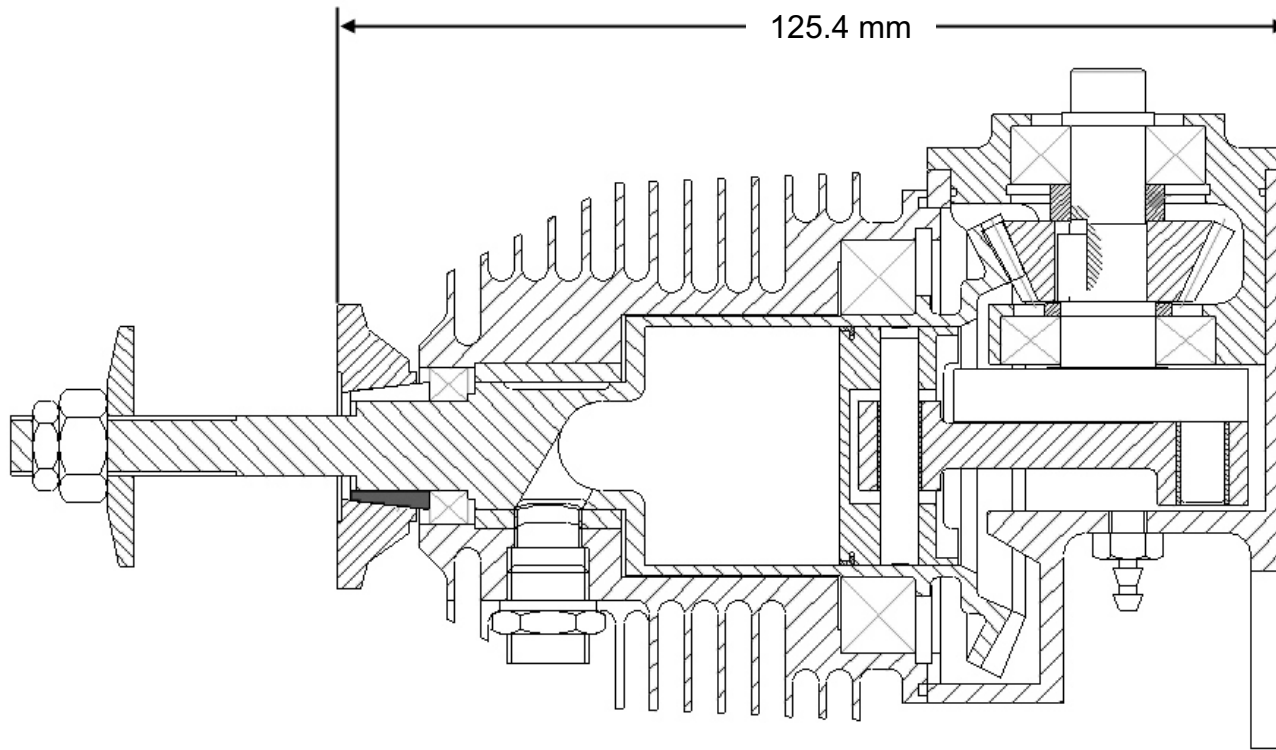
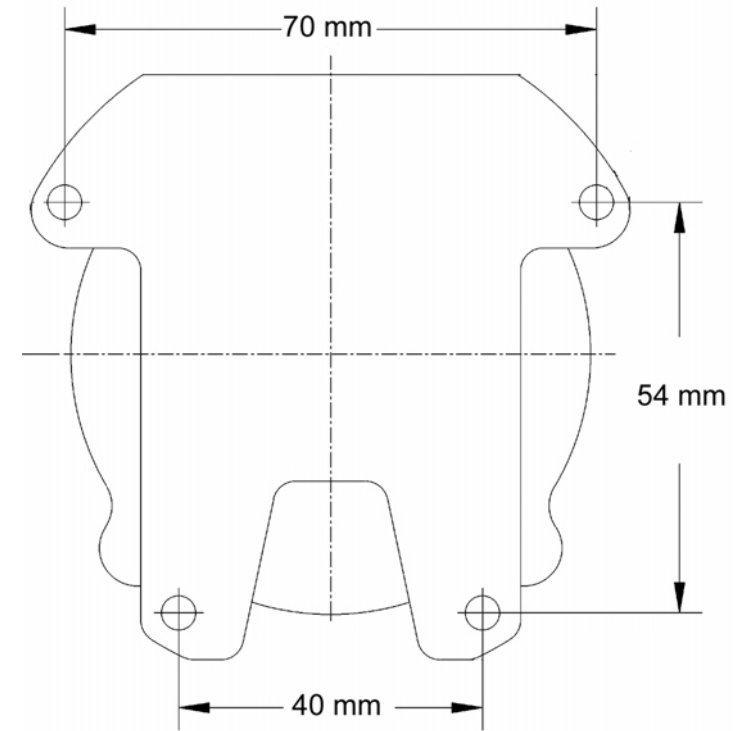


RCV120SP - Engine Dimensions



Centre Line for Mounting



To assist you with mounting, please use the template above.
Cut this out and line up with your engine.
Then simply mark through the centre directly onto your engine backplate.

RCV120-SP Specifications

	Displacement	Weight inc. silencer	Prop Shaft Dia	Exhaust Thread	Practical rpm @ prop	Cowling clearance	2-blade Prop sizes	3-blade Prop size	4-blade Prop size	Glow Plug	Approx. fuel consumption
Imperial	1.2 cu in	38.18 oz	5/16" UNF	M11 x 0.75	1400 - 6000 rpm	R39	16x16, 17x13, 18x12, 20x12	15.75x13	15.5x12	OS 'F'	> 0.7 fl oz/min
Metric	20 cc	1050 g									

Weston UK

84-88 London Road, Sittingbourne, Kent, England, ME9 9QH

Tel:+44 1795 521030 Tel/Fax +44 1795 522020